

# BF SERIES

## BF-1500



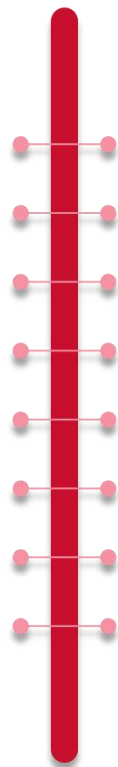
ZHEJIANG XINGYUE SEWING EQUIPMENT CO., LTD

**FUWEI**

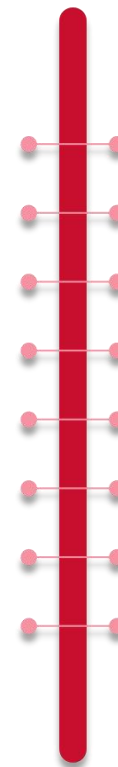
**EMBROIDERY MACHINE**



# Diversidied choise: 9 / 12 / 15 needles



**BF-900**



**BF-1200**



**BF-1500**



# MULTI FUNCTION



## FLAT EMBROIDERY

Random standard table, used for flat embroidery embroidery, will be more stable during the embroidery process, making the embroidery effect more beautiful.

Machine adopts 270° wide angle cap system, suitable for cap embroidery.

## CAP EMBROIDERY



## GARMENT EMBROIDERY

Randomly equipped with five different sizes of finished garment frames to meet the needs of customers for different embroidery area on different occasions

# DAHAO



# A15

1

## High defination 10' LED

The modern touch screen interface allow for a user-friendly experience.

2

## Exclusive interface

With a unique metal interface, easier to operate and shows unique high-end quality.

3

## 12 languages

With 12 languages of various countries, fully meet the needs of different countries for different languages.

4

## Auto color change, auto thread trim

Portable operation, with automatic color change and thread trim, Greatly improve work efficiency.



# Machine size

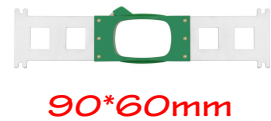
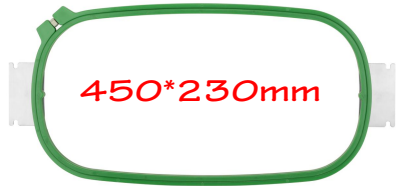


## ➤ WEIGHT:

1. Machine body only **50kgs**.
2. With carton package(including stand) : **120kgs**

# Stand accessories

## Garment frame standard with 2 sets



## ➤ Cap drive (1x per machine)



## ➤ Cap station (1x per machine)



## ➤ Cap rings (2 x per machine)



## ➤ table



## ➤ stand



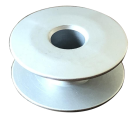
# Standard accessories



The whole set of tools



1 bottle of oil



2 set bobbin



1 set bobbin case



1 set USB

➤ Bobbin winder



➤ Handle plate



➤ Instruction book



➤ Power cord

